

1. General Data	R& D Center	Manufacturer	Clients
Company Name	OTC LAB	OTC Industrial.	
Item No:	PJ16AL00332	OT-HCC-1	
Short text:		LED Panel light	
Description:	600*600 serial LED panel light		

2. Product Data**2.1. Product Features**

→ 600*600mm LED panel light.

2.2. Technical Data

See Appendix 2, Construction drawing

See Appendix 3, PCB drawing.

See Appendix 4, Optical parameters.

2.3. Weights and Dimensions

Weight: 1200g

Dimensions: 600*600*14 mm

2.4 Product are in compliance to required product standards/regulations listed and marked below and actual reports/certificates must be available:

2.4.1 Main lamps complaint:

- CE EMC: Directive 2014/30/EU
- CE LVD/GS: Directive 2014/35/EU
- CE : EN 55015:2006+A1:2007+ A2:2009; EN 61000-3-2:2006+A1:2009+A2:2009
EN 61000-3-3: 2008 EN 61547:2009
EN 60598-1:2008+A11:2009

- RoHS: Directive 2011/65/EU
- Australia & New Zealand : Compliant to C-Tick AS/NZS CISPR 15
- CN : According to GB 17743, GB 17625.1

2.4.2 Raw material and accessories complaint:

- Fire proof PS: From ChiMei. Brand from Taiwan, Made in China.

3. General Details

Basic Machinery data	Material	AL Frame + PMMA Diffuser
	Dimension L*W*H (mm)	600*600*14
	Weight	1200g
	Ambient Temperature (ta)	0-55°C
	Max. Casing temperature (tc)	60°C
	Glare issue	No
	IP Rate	IP20
Electric Data	Rate Supply Voltage	175-265V AC
	Mains Frequency	50/60 HZ
	Mains power in normal operation	38W
	Mains current in normal operation	170mA
	Typ. λ (@ 230V 50 HZ, Normal operation)	0.9
	Leakage current (PE)	0
	Over Voltage protection	320V (1 H)
	Turn on changeover (@230V, 50HZ, Full Load)	<100ms
Standard	CE-EMC, CE-LVD, RoHS	



Optional Function



4. Packing Color Box Data**4.1 Giftbox or other packing specification**

Type of Packing: Color box

Reference to required standard packing specification (in appendix): see Appendix1 (identification picture)

Giftbox material: Bobble PP bag and Carton

4.2 Quantities, Weights and Dimensions**Quantities of items in packing:** 1 pc.**Gross Weight:** 1250 g**Net Weight:** 1.2 kg**Dimensions:** 610*610*21mm**5. Inner Carton/RDC Data (if applicable)**

None

6. Export Carton**6.1 Box specification**

Type of Packing: carton box

Reference to required standard packing specification: As your requirements

Reference to required markings/artwork: Based on your artworks

Sticker and area for label : Based on your art works

Material: cart board

6.2 Quantities, Weights and Dimensions**Quantities of items in packing (VE1):** 10 pcs. in a carton box.**Gross Weight:** 13 kg**Net Weight:** 13 kg**Dimensions:** 62*62*23cm

PS: Special quantity in a out carton is available, Based on your requirements.

Box EAN-Code: As your requirements

7. Competitive advantage:

1. The latest design, Popular in EU market.
2. Epistar 4014 SMD LED chips.
3. Moderate price can keep your priority in your market.
4. Developing market and sells well in many district in the world.
5. Immediately technical support if you email our project department, support@otcind.net .
6. Orientec Experienced project manager can give you any selling support if you need.

List of Appendices

Please note the appendices are part of the product specification !

- Appendix 1: Product Identification Photos .
- Appendix 2: Product construction drawing.
- Appendix 3: Optical parameters

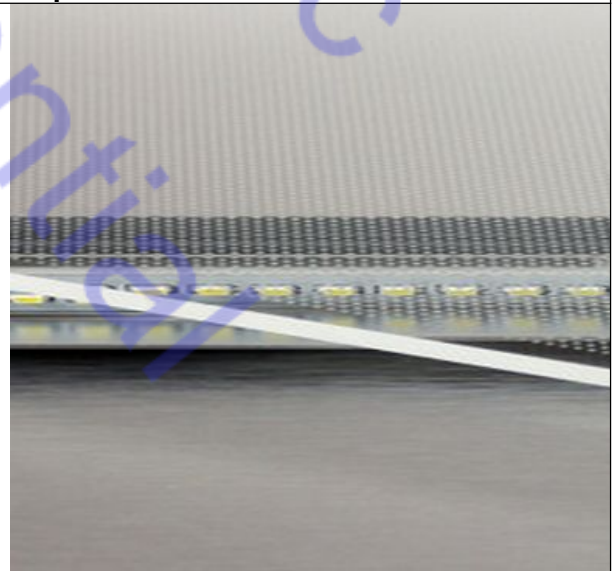
**Appendix 1
Product Identification Photos-1**



Installed Main profile

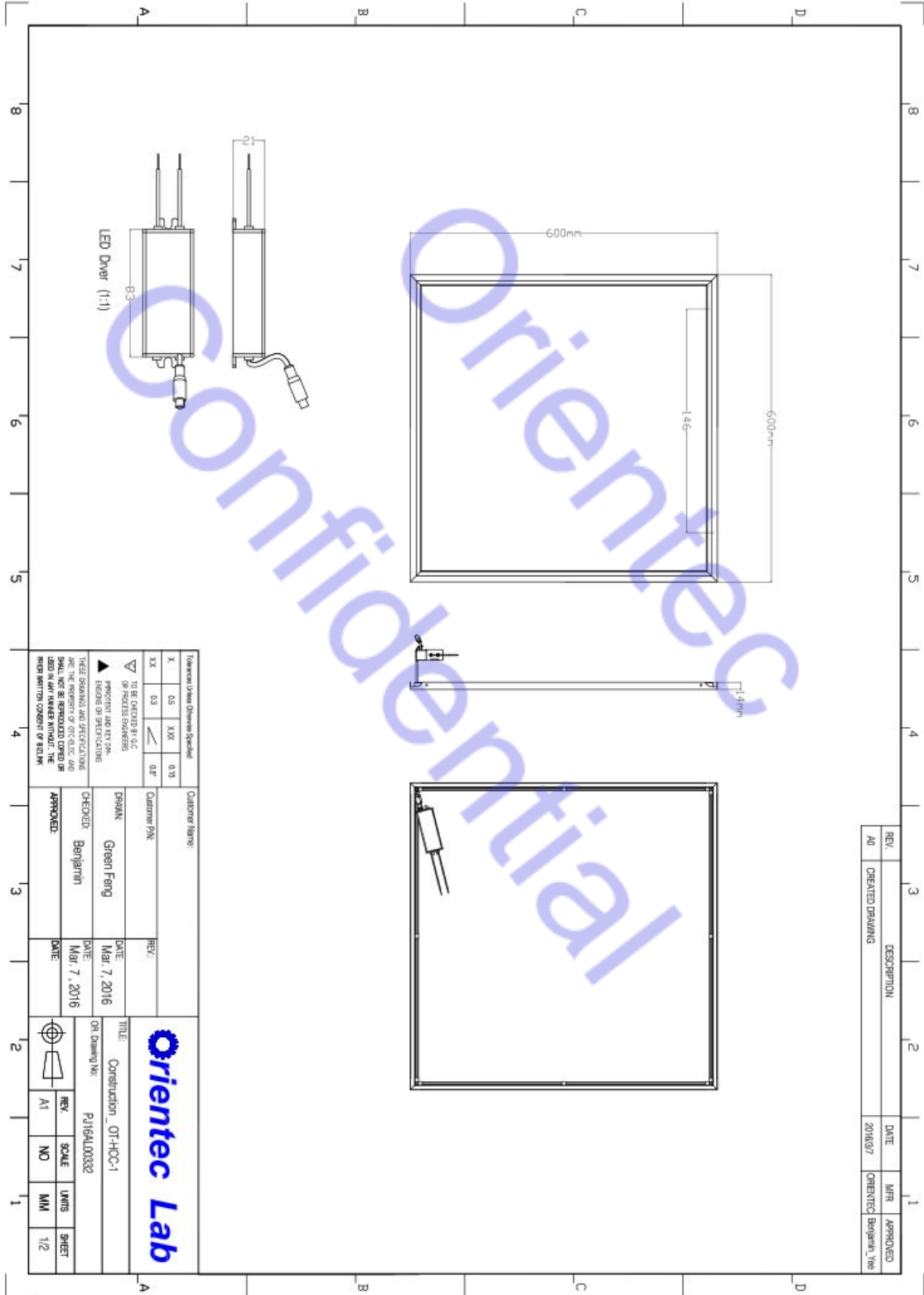


Main Profile



4016# LED Chip

Appendix 2 Outer Construction Drawing

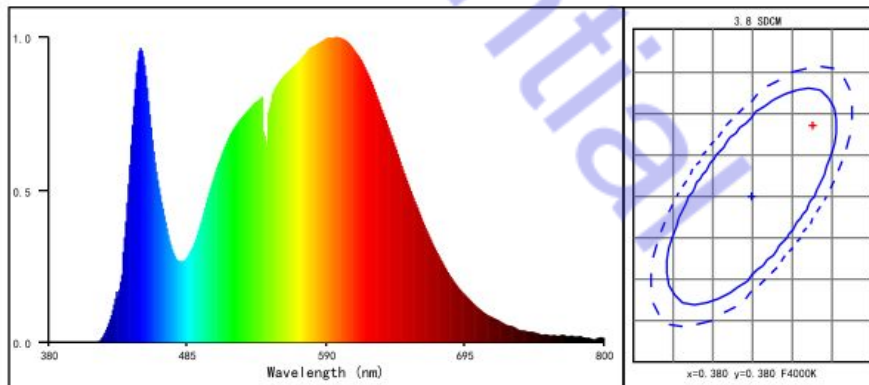


**Appendix 3
Optical electric test report****Orientec Lab****ORIENTEC LAB
Product test report**Product information:

Product model:HCC-36	Test time:2016-02-29 14:50:00
Product number:001	Environment humidity:65.0 %
Production merchant:宁波北仑奥亿双电器有限公司	Environment Temperature:10.9 °C
Tester:Zoom	Verification:SSAN
Test system:Huzhou Sinopol SPL720 Spectral analysis system	

CIE Parameter:

Coordinate: x=0.3878, y=0.3887	CCT: Tc=3895 K	Purity: Purity=33.1%		
u=0.2252, v=0.3386	Main Wave: $\lambda_d=577.9\text{nm}$	Peak Wave: $\lambda_p=449\text{nm}$		
Half Width: $\Delta \lambda_d=21.9\text{nm}$	Red Ratio: R=18.5%	Chromatism : SDCM=3.8		
Color rendering property :Ra=82.9				
R1=81	R2=88	R3=94	R4=83	R5=81
R6=84	R7=88	R8=65	R9=9	R10=72
R11=82	R12=60	R13=82	R14=97	R15=74

Other parameters:

Flux: $\Phi=3113.74\text{ Lm}$	Efficiency: Effi=81.6 Lm/W	Stability: %=257.79 %
Voltage: V=239.09 V	Current: I=0.179 A	Power: P=38.182 W
Power factor: PF=0.892		

Test by: Zoom Lau

Email: Support@otcind.net